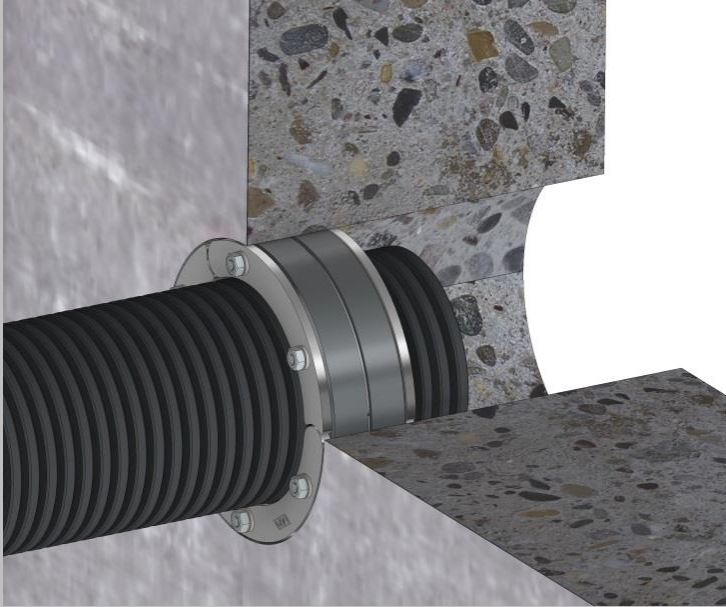


# Product data sheet

## RRD-WR(D)/G/40/V2A/EPDM

### Annular sealing for corrugated pipe



#### Advantages and use:

- High-quality and robust materials
- In split, ready-to-assemble design
- Fixation of the corrugated pipe in the core bore or lining pipe
- Short assembly time
- Soundproofing
- Protection against rodents
- Sealing and tying of corrugated pipes
- Suitable for retrofitting
- With patented exit protection

#### Technical details:

- Gas and watertight for pressing water
- Radon-tight
- With integrated support ring to protect the corrugated pipes
- Rubber width 40 mm
- Suitable for core drillings in waterproof concrete structures with stress classes 1 and 2 or casing pipes

#### Material specification:

Metal components: Press plates, screws and nuts (V2A), rubber (EPDM)

#### Prüfnachweise:

Radon tightness test  
IAF- Radioökologie GmbH



# Product data sheet

## RRD-WR(D)/G/40/V2A/EPDM

### Annular sealing for corrugated pipe



Versions	Clamping rage Ø
RRD-WR100/G/40/V2A/EPDM 1x50	48-50 mm
RRD-WR100/G/40/V2A/EPDM 1x63	61-63 mm
RRD-WR125/G/40/V2A/EPDM 1x63	61-63 mm
RRD-WR125/G/40/V2A/EPDM 1x75	73-75 mm
RRD-WR150/G/40/V2A/EPDM 1x75	73-75 mm
RRD-WR150/G/40/V2A/EPDM 1x92	90-92 mm
RRD-WR150/G/40/V2A/EPDM 1x110	108-110 mm
RRD-WR200/G/40/V2A/EPDM 1x110	108-110 mm
RRD-WR200/G/40/V2A/EPDM 1x125	123-125 mm
RRD-WR200/G/40/V2A/EPDM 1x140	138-140 mm
RRD-WR200/G/40/V2A/EPDM 1x160	158-160 mm