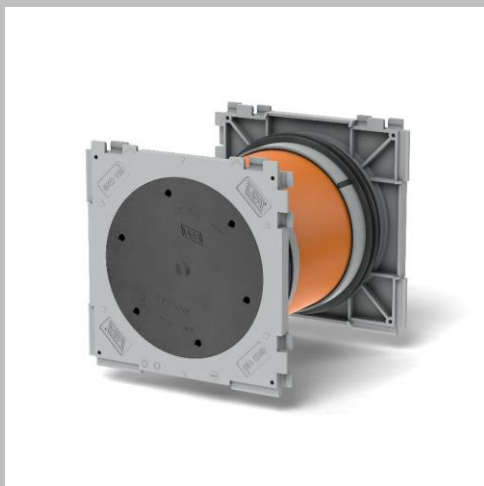


Product data sheet

BKD150-K2/(L)

Double wall insert BKD150



Technical data:

- Gas- and watertight up to 2.5 bar
- Frame size: 220 x 220 mm (per sealing sleeve)
- Centre distance: 210 mm with **spacer(ASH)**: 250 mm
- Minimum wall thickness: 100 mm
- Use in structures still to be constructed for WU concrete structures (white tank) Stress class 1 and 2

Material specification:

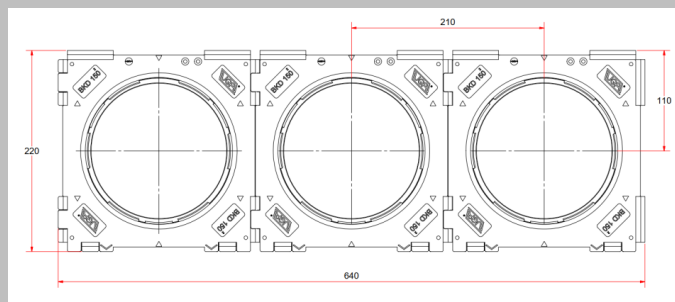
Sealing sleeve (ABS), 3-web gasket (TPE)
intermediate pipe (PVC), blind cover (ABS) with
TPE gasket (TPE)

Test certificates:

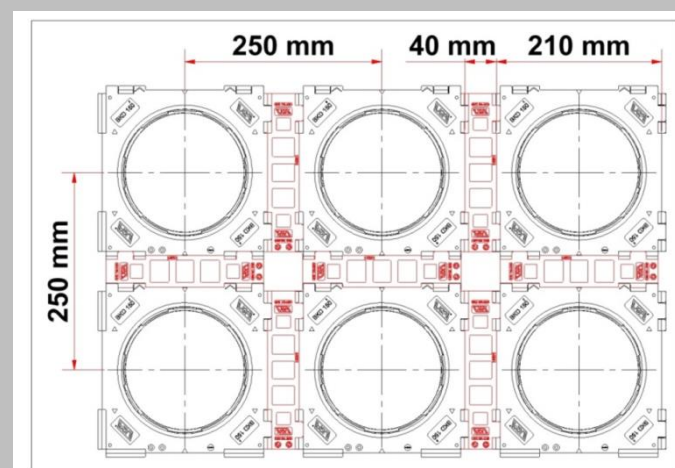
Lloyd's Register

Advantages and use:

- Quick and easy installation
- Gas-tight and pressure-water-tight due to blind cover already during installation
- permanently reliable sealing
- Connection of various variants from both sides possible due to custom-fit system covers and system inserts
- Simple plugging together of the sealing sleeves allows the formation of packs
- No post-processing required
- Centre distance can be increased by 40 mm by means of spacers



BKD150-K2 without spacer (ASH)



BKD150-K2 with spacer (ASH)