

FU

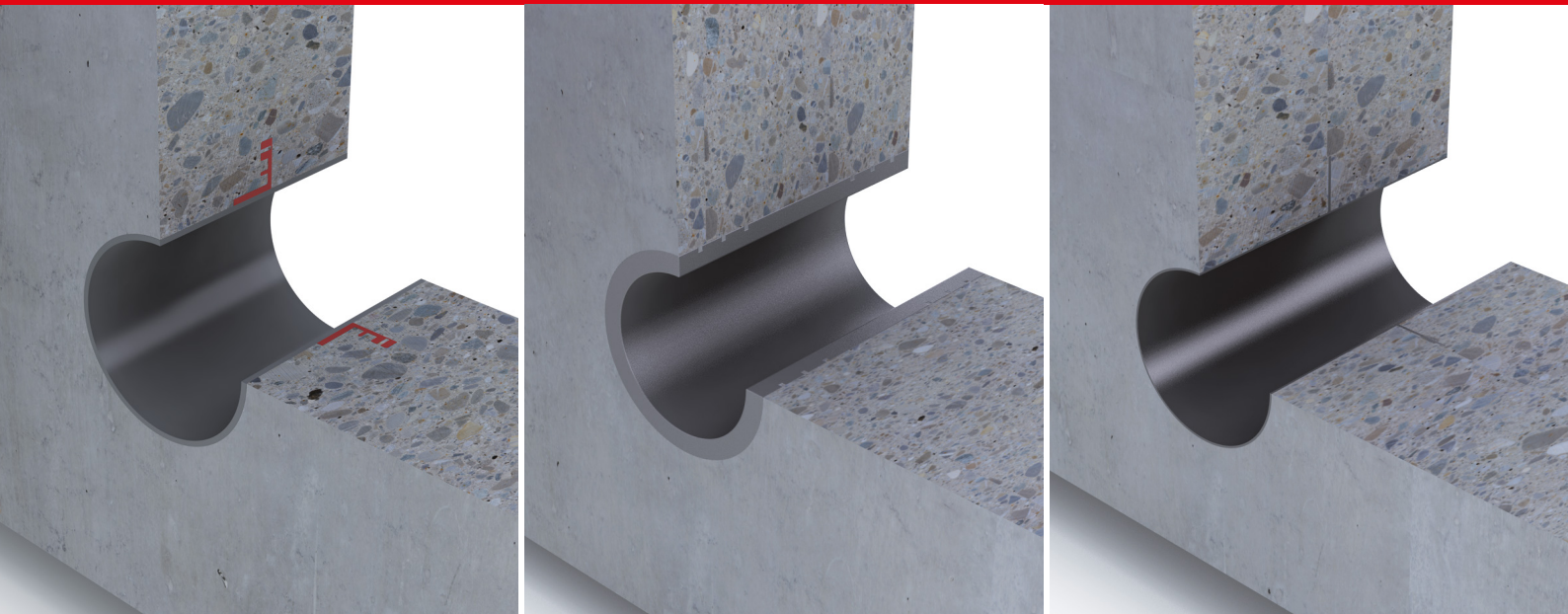
Wall sleeve

F+L

Fixed and loose flange designs

FU-NA

Front flange



24 hour delivery
service

Quality
guarantee



Worldwide sales
network

Service hotline
+49 7324 9696-33

FU wall sleeves from UGA

for cables and pipes

When laying cables and pipes through ceilings, walls and foundations, UGA offers the right wall sleeve for almost every situation.

UGA wall sleeves are impressive in many ways: through their material quality, easy handling, range of variants and individual cutting.

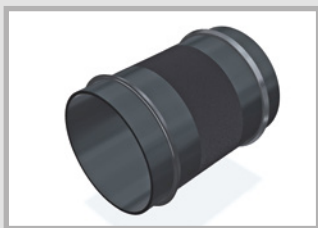
UGA offers wall sleeves made from plastic, fibre cement and stainless steel, which are supplied in the desired diameter and length. Stainless steel and fibre cement wall sleeves are also available with fixed and loose flanges.

All wall sleeve variants are suitable for installation in watertight concrete constructions (stress class 1 and 2).



FU-K

Plastic wall sleeves



FU-K for encasing in concrete

The roughened surface of the wall sleeve with sealing systems on both sides improves the connection between the wall sleeve and concrete.

Wall sleeves FU-K are supplied on both sides with PE covers closed.

The rubber press seals GPD required for sealing the cables and pipes must be ordered separately

Product name:

FU-K(A)/U(L)

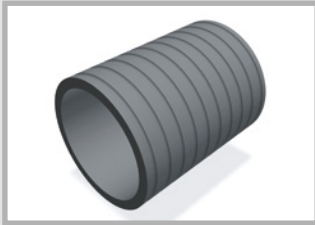
(A) = Inside diameter in mm

U(L) = Wall thickness in mm

FU-FZ

Fibre cement wall sleeves

Service hotline
+49 7324 9696-33



FU-FZ for encasing in concrete

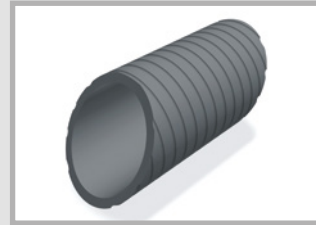
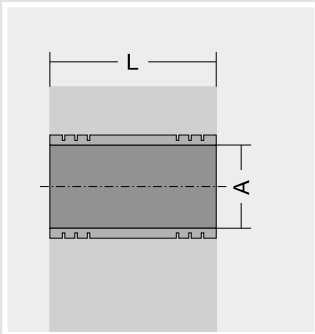
Wall sleeve made from asbestos-free fibre cement. The grooves on the surface improve the connection between the wall sleeve and concrete. The rubber press seals GPD required for sealing the cables and pipes must be ordered separately

Product name:

FU-FZ(A)/U(L)

(A) = Inside diameter in mm

U(L) = Wall thickness/bottom length in mm



FU-FZ with mould cut for encasing in concrete

For installation at an angle, the FU-FZ wall sleeves can be cut to size.

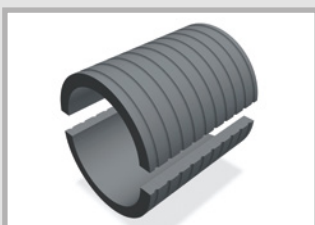
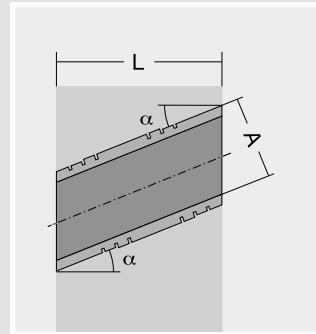
Product name:

FU-FZ(A)-S(α)/U(L)

(A) = Inside diameter in mm

(α) = Bevel angle in degrees to the horizontal

U(L) = Wall thickness/bottom length in mm



FU-FZ split for subsequent installation

For cables or pipes that have already been laid, this is subsequently laid around the lines and then encased in concrete.

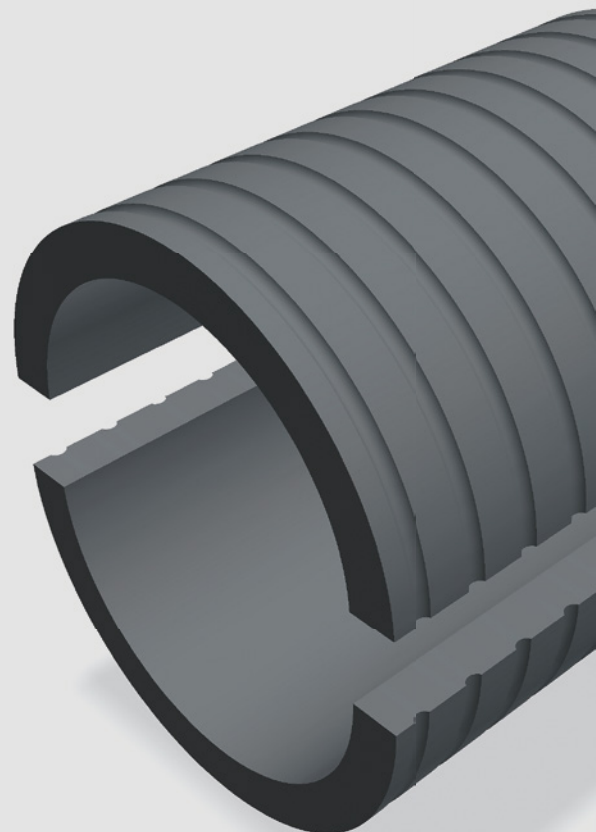
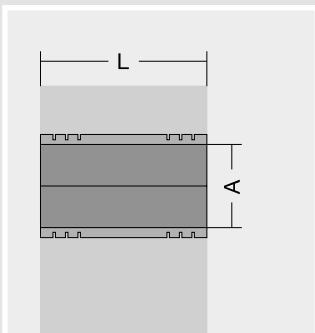
The rubber press seals GPD required for sealing the cables and pipes must be ordered separately

Product name:

FU-FZ/G/(A)/U(L)

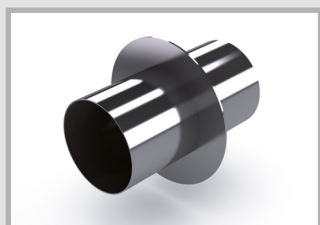
(A) = Inside diameter in mm

U(L) = Wall thickness in mm



FU-VA

Stainless steel wall sleeves



FU with central flange for encasing in concrete

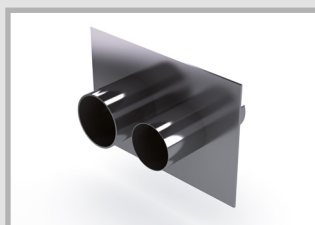
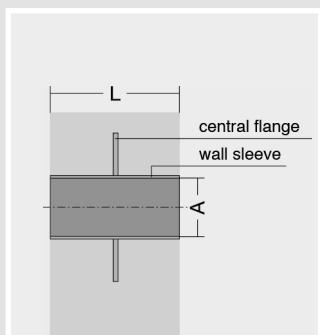
Wall sleeve for building connection with central flange as water barrier; Suitable for non-pressurised (W1) and pressurised water (W2); The wall sleeve is made entirely of A2 stainless steel, also available in A4 stainless steel on request; The rubber press seals GPD required for sealing the cables and pipes must be ordered separately

Product name:

FU(A)/U(L)/V2A

(A) = Inside diameter in mm

U(L) = Bottom length/wall thickness in mm



FU multiple element with central flange for encasing in concrete

Stainless steel plate as central flange with several welded stainless steel pipes. Number of pipes as desired; Completely made of A2 stainless steel, also available in A4 stainless steel on request.

The rubber press seals GPD required for sealing the cables and pipes must be ordered separately

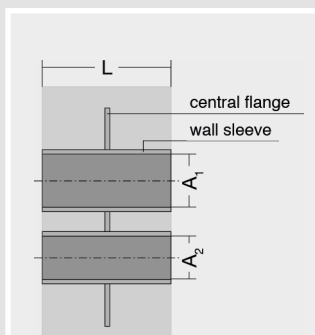
Product name:

FU/U(L)/V2A

(ZnxA_n)

(Z_nx A_n) = Number and diameter of the individual pipes

U(L) = Bottom length/wall thickness in mm



FU/F+L with fixed and loose flange to be encased in concrete

Wall sleeve for building connection in accordance with DIN 18533; Suitable for non-pressurised water (W1) – a version for pressurised water (W2) is also available;

Made entirely of A2 stainless steel, also available in A4 stainless steel on request; the fixed flange is encased flush in concrete in the formwork; The rubber press seals GPD required for sealing the cables and pipes must be ordered separately

Scope of delivery:

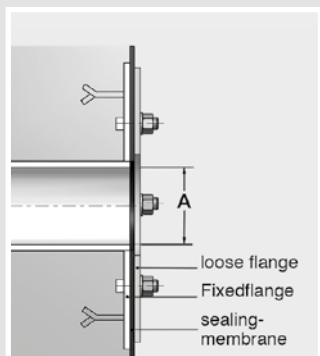
Fixed flange with welded stainless steel pipe, fastening elements and threaded bolts (M12/M20),
Loose flange with washers and nuts (M12/M20)

Product name:

FU/F+L/W(1/2)/(A)/U(L)/V2A

(A) = Inside diameter in mm

U(L) = Bottom length/wall thickness in mm



FU-NA/F+L with fixed and loose flange for dowelling

Wall sleeve for building connection in accordance with DIN 18533; Suitable for non-pressurised water (W1) – a version for pressurised water (W2) is also available. Made entirely of A2 stainless steel, also available in A4 stainless steel on request; the fixed flange is anchored to existing walls, ceilings or floor panels;

Sealing of routed cables or pipes is done using rubber press seals GPD

Scope of delivery:

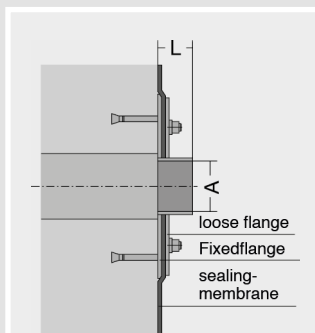
Fixed flange with welded stainless steel tube, fastening elements and threaded bolts (M12/M20), loose flange with washers and nuts (M12/M20)

Product name:

FU-NA/(G)/F+L/W(1/2)/(A)/U(L)/V2A

(A) = Inside diameter in mm

U(L) = Bottom length/wall thickness in mm





FU-NA/F+L with fixed and loose flange with top and bottom length for dowelling

Wall sleeve for building connection in accordance with DIN 18533; Suitable for non-pressurised water (W1) – a version for pressurised water (W2) is also available; Made entirely of A2 stainless steel, also available in A4 stainless steel on request; The fixed flange is dowelled to existing walls, ceilings or floor panels; The rubber press seals GPD required for sealing the cables and pipes must be ordered separately

Scope of delivery:

Fixed flange with welded stainless steel tube, fastening elements and threaded bolts (M12/M20); loose flange with washers and nuts (M12/M20)

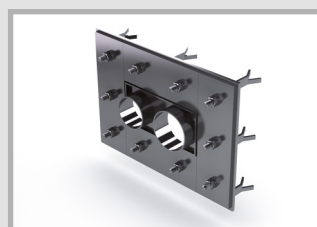
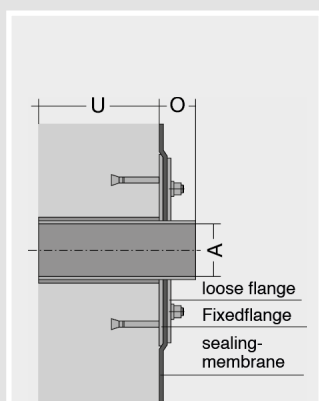
Product name:

**FU-NA/(G)/
F+L/W(1/2)/(A)/U(L)/O(L)/V2A**

(D) = Inside diameter in mm

O(L) = Top length in mm

U(L) = Bottom length/wall thickness in mm



FU/F+L multiple element with fixed and loose flange with top and bottom length to be encased in concrete

Several wall sleeves welded in a stainless steel plate for building connection in accordance with DIN 18533; Suitable for non-pressurised water (W1) – a version for pressurised water (W2) is also available; Made entirely of A2 stainless steel, also available in A4 stainless steel on request. The rubber press seals GPD required for sealing the cables and pipes must be ordered separately

Scope of delivery:

Fixed flange with welded stainless steel tubes, fastening elements and threaded bolts (M12/M20), loose flange with washers and nuts (M12/M20)

Product name:

**FU/(G)/F+L/W(1/2)/U(L)/O(L)/V2A
(ZnxA_n)**

(ZnxA_n) = Number and diameter of the individual pipes

O(L) = Top length in mm

U(L) = Bottom length/wall thickness in mm



FU-NA/F+L multiple element with fixed and loose flange for dowelling
Several wall sleeves welded in a stainless steel plate for building connection in accordance with DIN 18533; Suitable for non-pressurised water (W1) – a version for pressurised water (W2) is also available;

Made entirely of A2 stainless steel, also available in A4 stainless steel on request. The fixed flange is anchored to existing walls, ceilings or floor panels;

The rubber press seals GPD required for sealing the cables and pipes must be ordered separately

Scope of delivery:

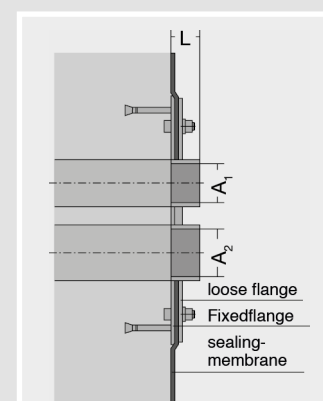
Fixed flange with welded stainless steel sleeves, fastening elements and threaded bolts (M12/M20), loose flange with washers and nuts (M12/M20)

Product name:

**FU-NA/(G)/F+L/W(1/2)/O(L)/V2A
(ZnxA_n)**

(ZnxA_n) = Number and diameter of the individual pipes

O(L) = Top length of the pipes in mm



Specifications for fixed and loose flange design in accordance with DIN 18533 Part 9

Øa Conducted Pipe or cable	Øi Wall sleeve	Pressurised water (W2)		Non-pressurised water (W1)	
		Øa Fixed flange	Øa Loose flange	Øa Fixed flange	Øa Loose flange
0- 63 mm	100 mm	425 mm	415 mm	245 mm	235 mm
0- 85 mm	125 mm	450 mm	440 mm	270 mm	261 mm
0-112 mm	150 mm	475 mm	465 mm	295 mm	286 mm
0-162 mm	200 mm	525 mm	516 mm	345 mm	338 mm
0-212 mm	250 mm	575 mm	566 mm	395 mm	388 mm
0-260 mm	300 mm	627 mm	617 mm	446 mm	441 mm
0-310 mm	350 mm	677 mm	668 mm	496 mm	488 mm
0-350 mm	400 mm	727 mm	717 mm	547 mm	538 mm
0-400 mm	450 mm	777 mm	769 mm	597 mm	591 mm
0-450 mm	500 mm	827 mm	819 mm	647 mm	641 mm

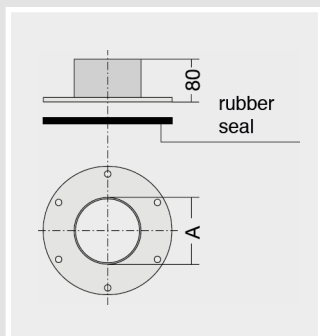
FU-NA

Stainless steel front flange



FU-NA front flange for dowelling

For sealing cables and pipes before a core drilling in a wall or ceiling; Made entirely of A2 stainless steel, also available in A4 stainless steel on request; Supplied with EPDM flange seal and fastening elements; The rubber press seals GPD required for sealing the cables and pipes must be ordered separately

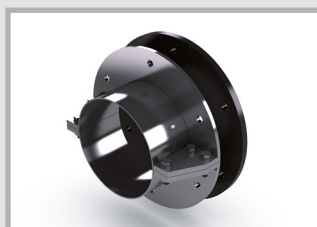


Product name:

FU-NA/(A)/080/V2A

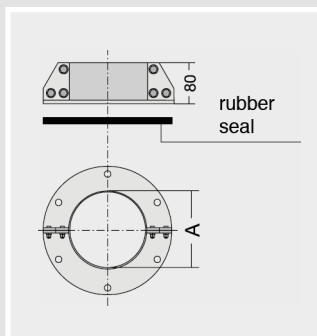
(A) = Inside diameter in mm

080 = Upper length 80 mm



FU-NA front flange, split, for subsequent dowelling

For subsequently sealing cables and pipes before a core drilling in a wall or ceiling; Made entirely of A2 stainless steel, also available in A4 stainless steel on request; Supplied with EPDM flange seal and fastening elements; The rubber press seals GPD required for sealing the cables and pipes must be ordered separately

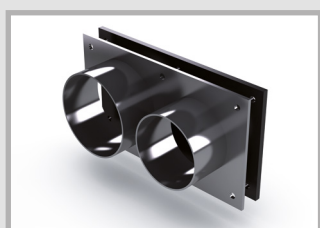


Product name:

FU-NA/G/(A)/080/V2A

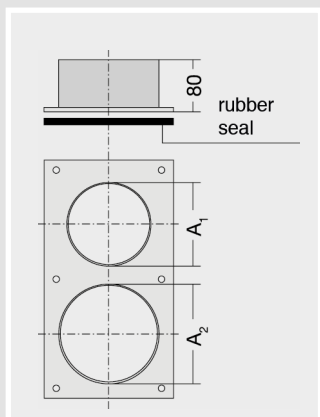
(A) = Inside diameter in mm

080 = Upper length 80 mm



FU-NA front flange as multiple element for dowelling

Multiple wall sleeves welded in a stainless steel plate ;to dowel to a wall or floor panel; Suitable for pressurised water; Made entirely of A2 stainless steel, also available in A4 stainless steel on request; Supplied with EPDM flange seal and fastening elements; The rubber press seals GPD required for sealing the cables and pipes must be ordered separately



Product name:

FU-NA/080/V2A

(ZnxA_n)

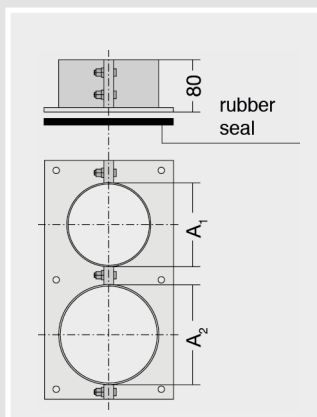
(ZnxA_n) = Number and diameter of the individual pipes

080 = Upper length 80 mm



FU-NA front flange as multiple element, split, for subsequent dowelling

Split multiple wall sleeve element for subsequent sealing of already laid cables or pipes; Suitable for pressurised water; Made entirely of A2 stainless steel, available in A4 stainless steel on request. Supplied with EPDM flange seal and fastening elements; The rubber press seals GPD required for sealing the cables and pipes must be ordered separately



Product name:

FU-NA/G/080/V2A

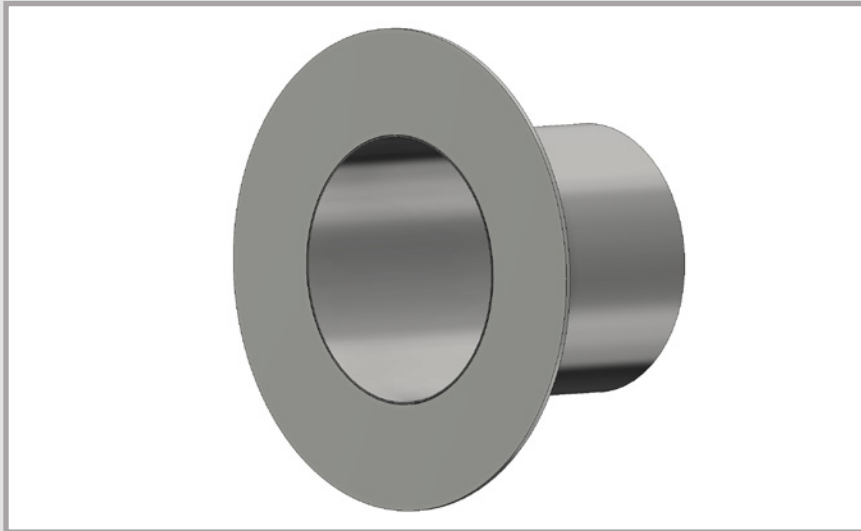
(ZnxA_n)

(ZnxA_n) = Number and diameter of the individual pipes

080 = Upper length 80 mm

FU/KF

Wall sleeve with adhesive flange



FU/KF wall sleeve with adhesive flange for encasing in concrete

Wall sleeve for building connection in accordance with DIN 18533 Part 3 for water impact class W2.1-E; Wall sleeve with adhesive flange 120 mm circumferential is made entirely of A2 stainless steel, also available in A4 stainless steel on request;

The wall sleeve with adhesive flange is used in structures that are still to be built and is used to connect thick coatings (PMBC, black trough);

The rubber press seals GPD necessary for the sealing of routed cables and pipes must be ordered separately.

Product name:

FU/KF/(A)/U(L)/V2A

(A) = Inside diameter in mm

(L) = Wall thickness in mm

FU-NA/KF wall sleeve with adhesive flange for dowelling

Wall sleeve for building connection in accordance with DIN 18533 Part 3 for water impact class W2.1-E;

Wall sleeve with adhesive flange 120 mm circumferential is made entirely of A2 stainless steel, also available in A4 stainless steel on request;

The wall sleeve with adhesive flange is used for retrofitting and is used to connect thick coatings (PMBC, black trough);

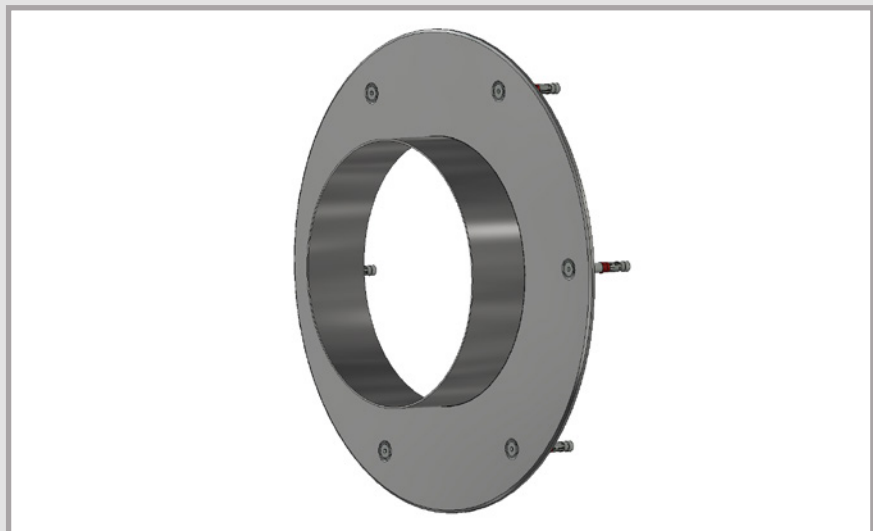
The rubber press seals GPD necessary for the sealing of routed cables and pipes must be ordered separately.

Product name:

FU-NA/KF/(A)/O(L)/V2A

(A) = Inside diameter in mm

(L) = Wall thickness in mm



Service hotline
+49 7324 9696-33

UGA SYSTEM-TECHNIK GmbH & Co. KG
Heidenheimer Str. 80 – 82, 89542 Herbrechtingen,
Germany
Tel. +49 7324 9696-0, Fax +49 7324 9696-96
info@uga.eu, www.uga.eu

We shall supply replacements for all parts that impair functionality due to material defects. No replacements will be provided for defects that are due to transport or storage or are caused by incorrect processing or installation or consequences of such. Our information is based on current technical knowledge. Subject to technical changes. Because of the abundance of possible influences during assembly and use, our information does not exempt processors and users from their own trials and tests.

The corresponding installation instructions apply to all UGA products.