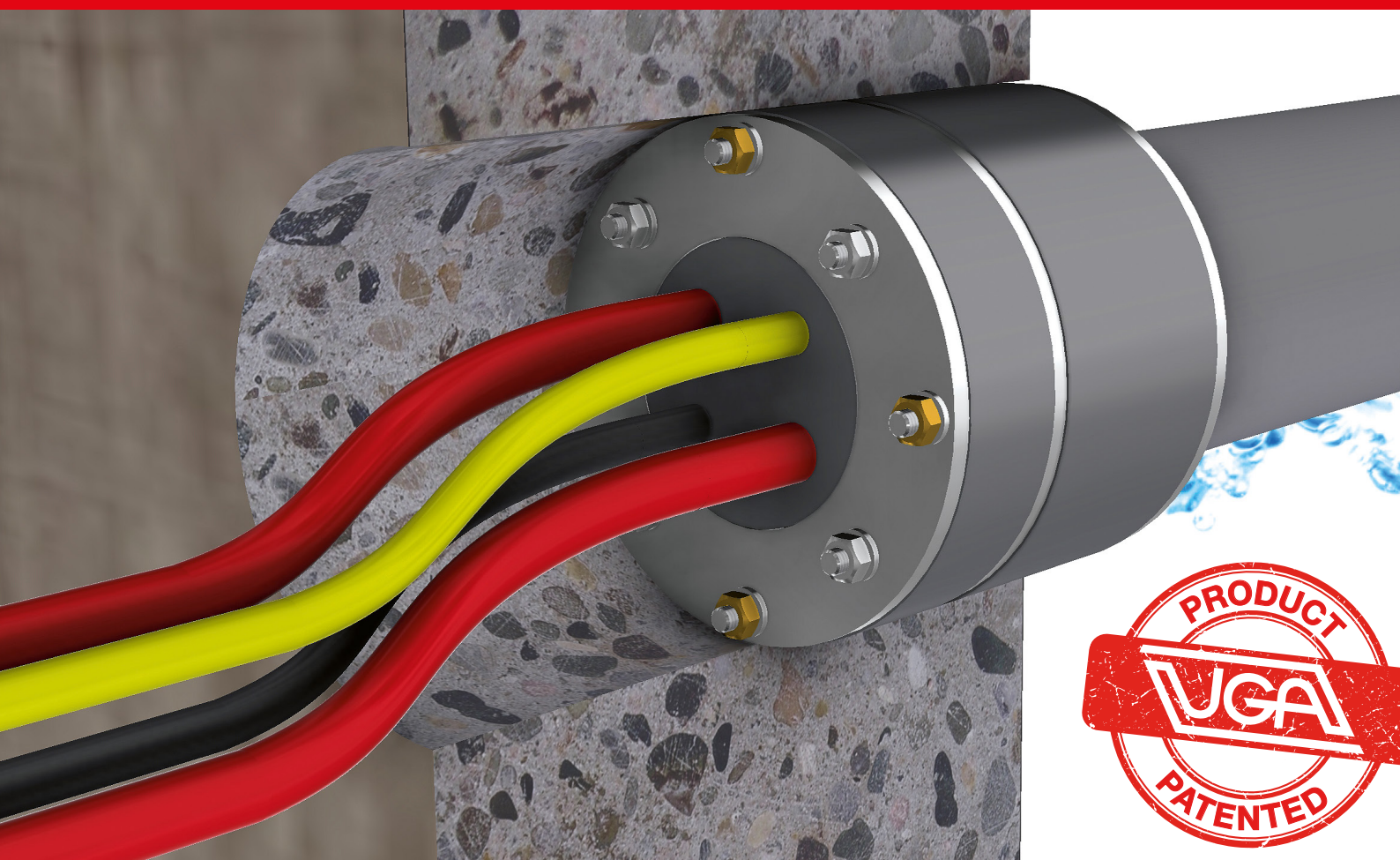


Rubber press seal GPD 2in1

Pipe sealing and cable entry in one!



24 hour delivery
service

Quality
guarantee



Worldwide
sales network

Service hotline
+49 7324 9696-33

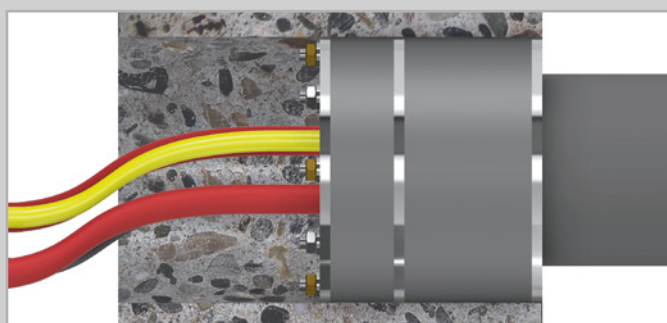
Innovations made by UGA –

Patented invention by UGA

► Seal insert GPD 2in1 Pipe sealing and cable entry in one!

Area of application

Simultaneous sealing of the pipe on the outside of the building and sealing of the cables on the inside of the building. Sealing takes place in core drilling made of watertight concrete (BKL-1 and -2) or wall sleeves. The sealing of a process pipe and the sealing of cables can now be carried out with just one seal insert from UGA.



► Advantages and uses

- Patented sealing of a pipe and several cables with a seal insert
- Media separation of layers 1 and 2
- Made to measure for your application
- Cable side (layer 2) with integrated blind cover once pipe side (level 1) has been sealed
- Flexible use in core drillings, wall sleeves, wall inserts and front flange
- Gas and water pressure-tight
- Short assembly time
- Sound-insulating
- Protection against rodents

► Available types

Product name:

**GPD100/90/2in1/(DH)/WE54/V2A/EPDM
Zx(D)**

Rubber press seal GPD, 2-layer, closed,
Metal parts made from A2 stainless steel
Layer 1: EPDM rubber 60 mm,
with 1 drilled hole for a pipe up to a maximum of 66 mm (DH)
Layer 2: EPDM rubber 30 mm, with exchangeable insert Ø 54 mm
Maximum configuration e.g. 9 cables up to 8 mm

Product name:

**GPD125/90/2in1/(DH)/WE65/V2A/EPDM
Zx(D)**

2-layer rubber press seal GPD, closed,
metal parts made from A2 stainless steel
Layer 1: EPDM rubber 60 mm,
with 1 drilled hole for one pipe up to Ø max. 87 mm (DH)
Layer 2: EPDM rubber 30 mm, with exchangeable insert Ø 65 mm
Maximum configuration e.g. 16 cables up to 8 mm

Product name:

**GPD150/90/2in1/(DH)/WE85/V2A/EPDM
Zx(D)**

2-layer rubber press seal GPD, closed,
metal parts made from A2 stainless steel
Layer 1: EPDM rubber 60 mm,
with 1 drilled hole for a pipe up to a maximum diameter of 112 mm (DH)
Layer 2: EPDM rubber 30 mm, with exchangeable insert Ø 85 mm
Maximum configuration e.g. 25 cables up to 8 mm

Product name:

**GPD200/90/2in1/(DH)/WE110/V2A/EPDM
Zx(D)**

2-layer rubber press seal GPD, closed,
metal parts made from A2 stainless steel
Layer 1: EPDM rubber 60 mm,
with 1 drilled hole for a pipe up to a maximum diameter of 162 mm (DH)
Layer 2: EPDM rubber 30 mm, with exchangeable insert Ø 110 mm
Maximum configuration e.g. 40 cables up to 8 mm

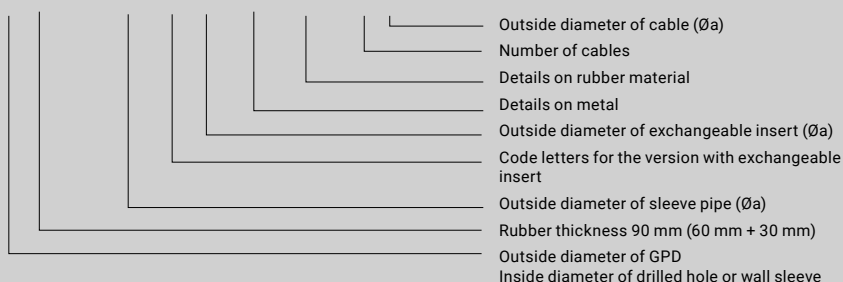
(DH) = Outside diameter of sleeve pipe (Øa)

(Z) = Number of cables

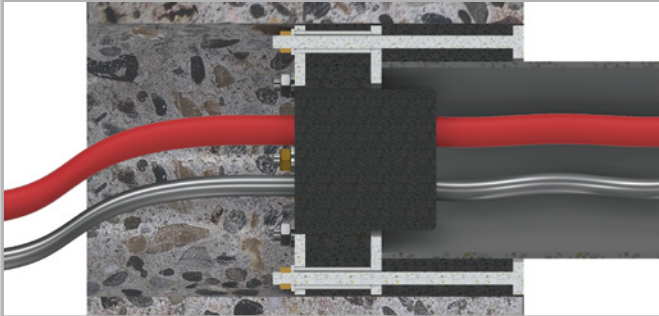
(D) = Outside diameter of cable (Øa)

Product index for GPD 2in1 (example)

GPD(A)/90/2in1/(DH)/WE(A1)/V2A/EPDM/(Z)x(D)



Rubber press seal **GPD 2in1**



► Assembly process

With the 2-layer rubber press seal, the process pipe routed to the building can be connected and sealed to the entry opening. The incoming process pipe is inserted into the rubber press seal and then inserted into the entry opening with the rubber press seal. By tightening the screws/nuts on the first layer to the entry opening, the process pipe is fixed and sealed.

In the next step, cables or small pipes can be pulled through the process pipe which is sealed on the outside of the building, then pushed through the second layer of the rubber press seal and fixed and sealed by tightening the screws/nuts on the second layer.

► Variants

- Various sizes possible, according to entry opening and incoming process pipe
- Variants for non-pressurised water and for pressurised water
- Device for connecting corrugated pipes possible

If you are interested in this system, please send us an e-mail to info@uga.eu

Of course, your personal contact from UGA will be happy to answer any questions you may have.

Service hotline
+49 7324 9696-33

UGA SYSTEM-TECHNIK GmbH & Co. KG
Heidenheimer Str. 80 – 82, 89542 Herbrechtingen,
Germany
Tel. +49 7324 9696-0, Fax +49 7324 9696-96
info@uga.eu, www.uga.eu

We shall supply replacements for all parts that impair functionality due to material defects. No replacements will be provided for defects that are due to transport or storage or are caused by incorrect processing or installation or consequences of such. Our information is based on current technical knowledge. Subject to technical changes. Because of the abundance of possible influences during assembly and use, our information does not exempt processors and users from their own trials and tests.

The corresponding installation instructions apply to all UGA products.