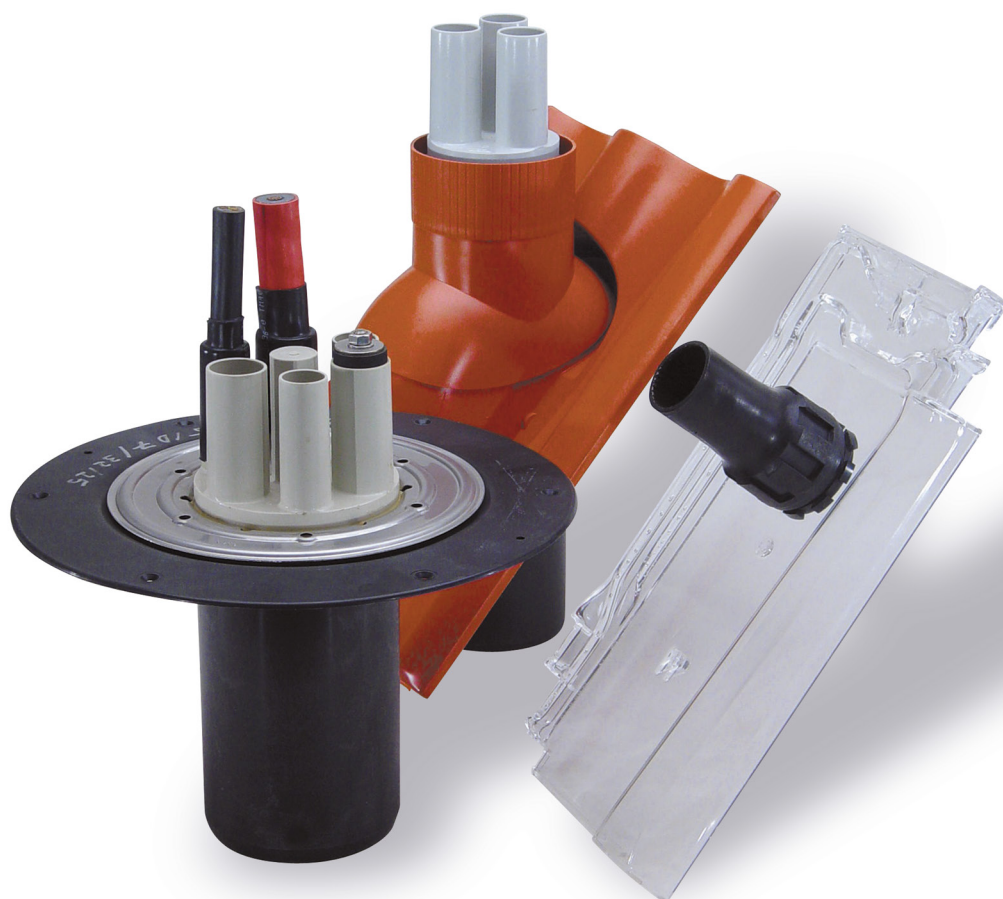


# MSD, MFD

## Roof entries



24 hour delivery  
service

Quality  
guarantee



Worldwide sales  
network

Service hotline  
+49 7324 9696-33

Multi gabled roof entries MSD are used to lay cables through gabled roofs, for example for mobile phone systems, photovoltaic systems, solar panels or TV antennas. UGA multi gabled roof entries are available suitable for almost all roof coverings: Corrugated sheet, slate, plain roof tiles crown roof tiles, interlocking roof tiles and others.

They can be used on sloping roofs from 15° to 45°.



**MSD110 with one connection piece and one thermal shrink sleeve**  
Version for a cable with a diameter of 26 – 73 mm

Product name:  
**MSD110/D1/75**



**MSD110 with three connection pieces and three thermal shrink sleeves**  
Suitable for three cables with diameter 7 – 28 mm; Various AK spreader caps or VS30 sealing plugs are available as accessories.

Product name:  
**MSD110/D3/30**



**MSD110 with five connection pieces and five thermal shrink sleeves**  
Suitable for five cables with diameter 7 – 18 mm; Various AK spreader caps or VS20 sealing plugs are available as accessories

Product name:  
**MSD110/D5/20**



**MSD110 with one connection piece and one thermal shrink sleeve**  
Version for a cable with a diameter of 26 – 78 mm

Product name:  
**MSD110/D1/80**



**MSD110 with three connection pieces and three thermal shrink sleeves**  
Suitable for three cables with diameter 16 – 44 mm; Various AK spreader caps or VS46 sealing plugs are available as accessories.

Product name:  
**MSD110/D3/46**



**MSD110 with seven connection pieces and six thermal shrink sleeves**  
One connection piece is supplied closed and can be opened if necessary; Suitable for max. four cables with a diameter of 7-23 mm and max. three cables with a diameter of 7-30 mm; Various AK spreader caps or VS25 sealing plugs are available as accessories

VS32  
Product name:  
**MSD110/D7/32/25**



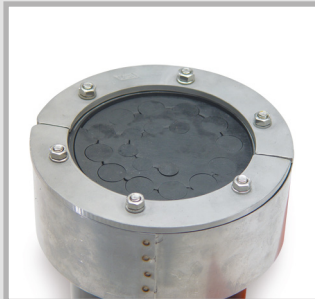
# MFD

## Multi flat roof entry

### ► Special construction for mobile communications

UGA offers special multi gabled roof entries MSD with rubber press seals GPD for connecting to mobile radio systems.

They are available to match almost all roof coverings: Corrugated sheet, slate, plain roof tiles crown roof tiles, interlocking roof tiles and others. They can be used on sloping roofs from 15° to 45°. On request, we also manufacture mobile phone constructions for flat roofs.

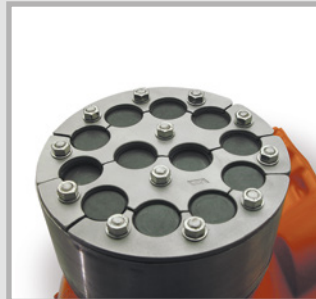


#### MSD110 with GPD-WE

Includes split rubber press seal with exchangeable insert Ø 110 mm. For maximum 12 x 1/2" (16 mm) and 6 x RG8 cable (11 mm)

Product name:

**MSD110/GPD150/G/60/WE110/V2A/EPDM**



#### MSD110 with GPD-F

Multi gabled roof entry with split rubber press seal and overlaying flange GPD150/G/60/F/V2A/EPDM

Product name:

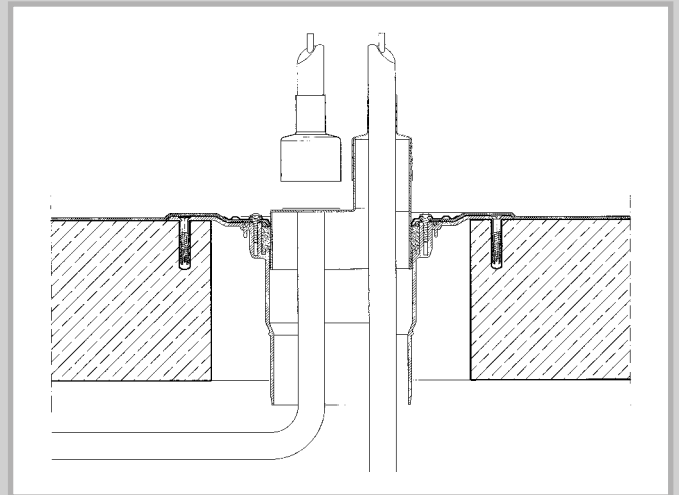
**MSD110/GPD150/F**

### Maximum configuration GPD with exchangeable insert (example)

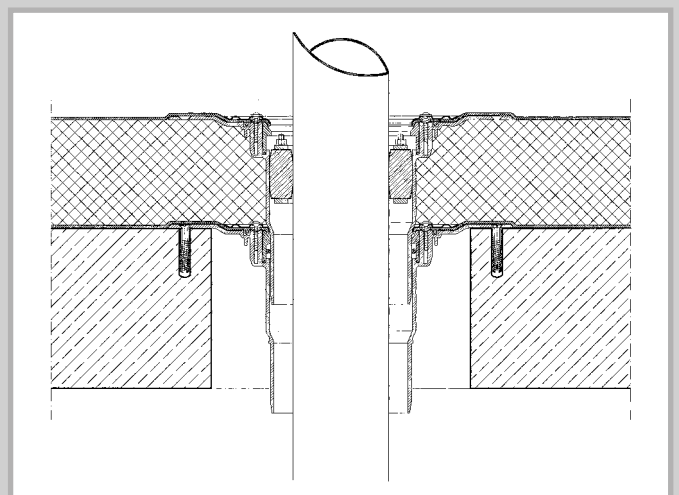
GPD-Outside diameter (A)	Maximum diameter Cables/pipes			Order number split GPD against pressurised water
	Z = 3	Z = 5	Z = 9	
150 mm	up to 42 mm	up to 34 mm	up to 24 mm	GPD150/G/60/WE110/(Z)x(D)

(Z) Number of cables to be sealed  
(D) Diameter of the individual cables

Multiple flat roof entries MFD are used to lay cables through flat roofs, for example for mobile phone systems, photovoltaic systems, solar panels or TV antennas. They are optionally available with the SF loose flange for connection to a roofing sheet or with prepared standard DB bitumen roofing sheet for welding with an elastomer sealing sheet. All UGA multiple flat roof entries are available with an extension unit AE for roof sealing on two levels.



Application example MFD



Application example MFD/AE (with extension unit)



#### **MFD50 with GPD**

Includes associated rubber press seal GPD 68/1/ZxD for one or more cables

With loose flange:

Product name:

**MFD-SF/50/GPD68/G/60**

With standard roofing sheet:

Product name:

**MFD-DB/50/GPD68/G/60**



#### **MFD125 with one connection piece and one thermal shrink sleeve**

Version for a cable with a diameter of 26 – 78 mm

With loose flange:

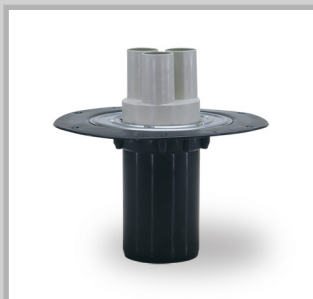
Product name:

**MFD-SF/125/D1/80**

With standard roofing sheet:

Product name:

**MFD-DB/125/D1/80**



#### **MFD125 with three connection pieces and three thermal shrink sleeves**

Suitable for three cables with diameter 16–44 mm; Various AK spreader caps or VS46 sealing plugs are available as accessories.

With loose flange:

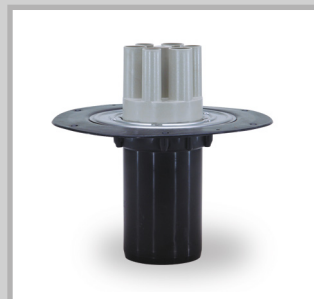
Product name:

**MFD-SF/125/D3/46**

With standard roofing sheet:

Product name:

**MFD-DB/125/D3/46**



#### **MFD125 with seven connection pieces and six thermal shrink sleeves**

One connection piece is supplied closed and can be opened if necessary; Suitable for max. four cables with a diameter of 7-23 mm and max. four cables with a diameter of 7-30 mm; Various AK spreader caps or VS25 or VS32 sealing plugs are available as accessories

With loose flange:

Product name:

**MFD-SF/125/D7/32/25**

With standard roofing sheet:

Product name:

**MFD-DB/125/D7/32/25**



#### **MFD160 with one connection piece and one thermal shrink sleeve**

Version for a cable with a diameter of 34 – 108 mm

With loose flange:

Product name:

**MFD-SF/160/D1/110**

With standard roofing sheet:

Product name:

**MFD-DB/160/D1/110**

Version for a cable with a diameter of 26 – 78 mm

With loose flange:

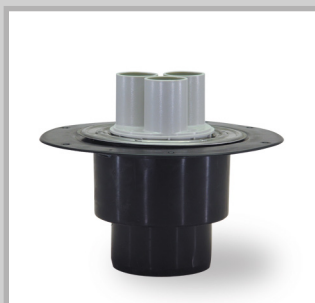
Product name:

**MFD-SF/160/D1/80**

With standard roofing sheet:

Product name:

**MFD-DB/160/D1/80**



#### **MFD160 with three connection pieces and three thermal shrink sleeves**

Suitable for three cables with diameter 22 – 57 mm; Various AK spreader caps or VS60 sealing plugs are available as accessories.

With loose flange:

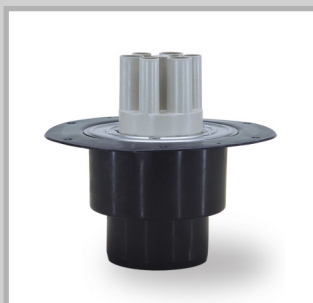
Product name:

**MFD-SF/160/D3/59**

With standard roofing sheet:

Product name:

**MFD-DB/160/D3/59**



#### **MFD160 with eight connection pieces and four thermal shrink sleeves**

Four connection pieces are supplied closed and can be opened if necessary; Suitable for max. four cables with a diameter of 7-23 mm and max. four cables with a diameter of 7-33 mm; Various AK spreader caps or VS25 or VS35 sealing plugs are available as accessories

With loose flange:

Product name:

**MFD-SF/160/D8/35/25**

With standard roofing sheet:

Product name:

**MFD-DB/160/D8/35/25**



#### **MFD with extension unit AE**

The multi flat roof entry MFD with extension unit AE is available in all MFD variants: in the sizes 50, 125, 160 and with one, three, seven or eight connection pieces. For example size 125 with seven connection pieces and loose flange

With loose flange:

Product name:

**MFD-SF-AE/125/D7/32/25**

With standard roofing sheet:

Product name:

**MFD-DB-AE/125/D7/32/35**

# Multi flat roof entry

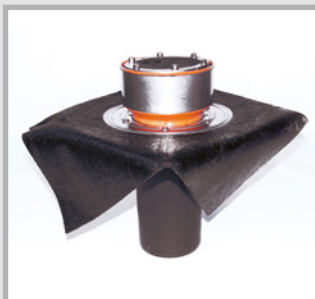


## **MFD125 with GPD150/WE**

Multi flat roof entry with rubber press seal GPD150/G/60/WE110/V2A/EPDM ZxD for one or more cables

With loose flange:  
Product name:

**MFD-SF/125/GPD150/WE**



## **MFD125 with GPD150/WE**

Multi flat roof entry with rubber press seal GPD150/G/60/WE110/V2A/EPDM ZxD for one or more cables

With standard roofing sheet:  
Product name:

**MFD-DB/125/GPD150/WE**



## **MFD160 with GPD150/WE**

Multi flat roof entry with rubber press seal GPD150/G/60/WE110/V2A/EPDM ZxD for one or more cables

With loose flange:  
Product name:

**MFD-SF/160/GPD150/WE**



## **MFD160 with GPD150/WE**

Multi flat roof entry with rubber press seal GPD150/G/60/WE110/V2A/EPDM ZxD for one or more cables

With standard roofing sheet:  
Product name:

**MFD-DB/160/GPD150/WE**



## **MFD160 with GPD150/WE**

Multi flat roof entry with rubber press seal GPD150/G/60/WE110/V2A/EPDM ZxD for one or more cables

With loose flange:  
Product name:

**MFD-SF/160/GPD150/WE**



## **MFD160 with GPD150**

Multi flat roof entry with rubber press seal GPD150/G/60/V2A/EPDM 1xD for one pipe or cable

With standard roofing sheet:  
Product name:

**MFD-DB/160/GPD150**

All variants also available with extension unit AE.

# Accessories



## Thermal shrink sleeve set for connection pieces which can be broken through

Product name:  
**TM set D8/35/25**



## 3-finger AK spreader caps

Hot shrink technology for sealing three cables in one connection piece

Product name:  
**AK35/3F/2-12**  
for cables with outside diameter of 2 - 11 mm  
Product name:  
**AK50/3F/5-22**  
for cables with outside diameter of 5-21 mm  
Product name:  
**AK75/3F/8-29**  
for cables with outside diameter of 8 - 28 mm



## 4-finger spreader caps AK

Hot shrink technology for sealing four cables in one connection piece

Product name:  
**AK35/4F/2-13**  
for cables with outside diameter of 2-12 mm  
Product name:  
**AK50/4F/5-20**  
for cables with outside diameter of 5-19 mm  
Product name:  
**AK75/4F/8-29**  
for cables with outside diameter of 8 - 28 mm



## Sealing plug VS

For sealing unoccupied connection pieces; Can be quickly removed for retrofitting and changing cables; Versions available for connection pieces with diameters 20, 25, 32, 35, 46 and 60 mm

Product name:  
**VS20 / VS25 / VS32/34 / VS35 / VS46 / VS58/60**



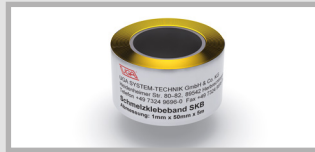
## Cold-shrink sleeve KS

For easy and fast assembly without aids, in all weather conditions; 2 bar gas and watertight; Available for all MSD and MFD



## Cable cleaner KR

For environmentally friendly cleaning of cables of all kinds, even in the case of stubborn contamination; Odourless and residue-free evaporation; 500 ml spray bottle and 1,000 ml bottle; Density at 20°C: 0.764 g/cm<sup>3</sup>  
Flash point: > 61°C  
Evaporation number: 60  
Identification: X<sub>n</sub>  
Product name:  
**KR/1-litre**



## Melt-type adhesive tape SKB

Cold welding tape with very good adhesive properties for sealing and for corrosion protection; Ideal for wrapping around cables and pipes to enlarge the diameter for shrinking; Suitable for all plastics and metals; Thickness: 1 mm, width: 50 mm, roll length: 3.00 m  
Product name:  
**SKB**



## Torque screwdriver 5 Nm with fixed torque