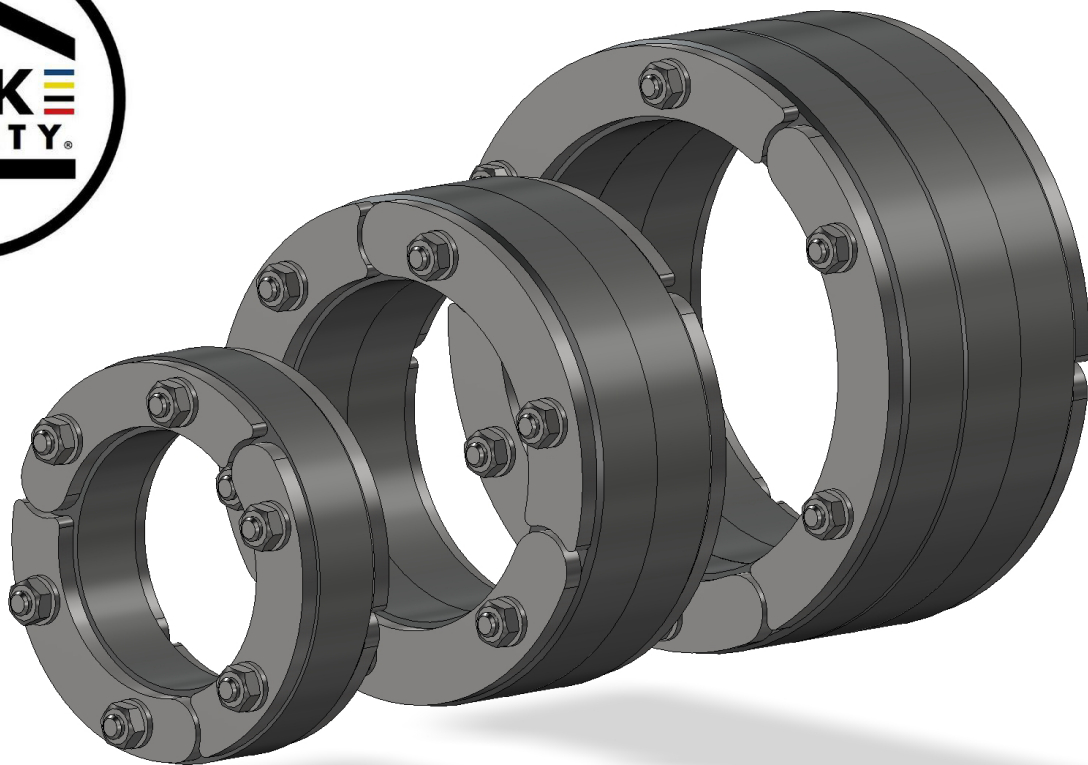


RRD

Annular sealing

RRD-WR

Annular sealing for corrugated pipe



24 hour delivery
service

Quality
guarantee



Worldwide
sales network

Service hotline
+49 7324 9696-33

RRD

Annular sealing

► Area of application

Annular sealings RRD are used for **quick** and **reliable** sealing of pipes.
These annular sealings are **gas and watertight** and **suitable for all common process pipes** for sealing in a core drilling in waterproof concrete (BKL-1 and 2) or in a wall sleeve.

► Advantages and uses:

- Certified according to FHRK test guidelines
- Sealing elements made of EPDM rubber
- Gas and waterproof, even under radial load
- Cost-effective standard sizes
- Short assembly time
- Metal parts made from A2 stainless steel



Annular sealing RRD1

Made from EPDM rubber, 20 mm against non-pressurised water

Metal parts made from A2 stainless steel

Product name:

**RRD(A)/20/V2A/EPDM
1x(D)**

(A) = Outside diameter RRD1
= Inside diameter of core drilling or wall sleeve
(D) = Outside diameter of pipe (Øa)

Available variants:

RRD100/20/V2A/EPDM/1x34
RRD100/20/V2A/EPDM/1x43
RRD100/20/V2A/EPDM/1x50
RRD100/20/V2A/EPDM/1x63

RRD125/20/V2A/EPDM/1x63
RRD125/20/V2A/EPDM/1x75
RRD125/20/V2A/EPDM/1x83

RRD150/20/V2A/EPDM/1x83
RRD150/20/V2A/EPDM/1x92
RRD150/20/V2A/EPDM/1x110

RRD200/20/V2A/EPDM/1x110
RRD200/20/V2A/EPDM/1x118
RRD200/20/V2A/EPDM/1x126
RRD200/20/V2A/EPDM/1x135
RRD200/20/V2A/EPDM/1x140
RRD200/20/V2A/EPDM/1x160



Annular sealing RRD2

Made from EPDM rubber, 40 mm against pressurised water,

Metal parts made from A2 stainless steel

Product name:

**RRD(A)/40/V2A/EPDM
1x(D)**

(A) = Outside diameter RRD2
= Inside diameter of core drilling or wall sleeve
(D) = Outside diameter of pipe (Øa)

Available variants:

RRD100/40/V2A/EPDM/1x34
RRD100/40/V2A/EPDM/1x43
RRD100/40/V2A/EPDM/1x50
RRD100/40/V2A/EPDM/1x63

RRD125/40/V2A/EPDM/1x63
RRD125/40/V2A/EPDM/1x75
RRD125/40/V2A/EPDM/1x83

RRD150/40/V2A/EPDM/1x83
RRD150/40/V2A/EPDM/1x92
RRD150/40/V2A/EPDM/1x110

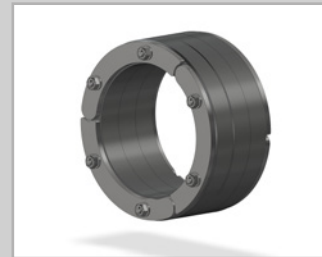
RRD200/40/V2A/EPDM/1x110
RRD200/40/V2A/EPDM/1x118
RRD200/40/V2A/EPDM/1x126
RRD200/40/V2A/EPDM/1x135
RRD200/40/V2A/EPDM/1x140
RRD200/40/V2A/EPDM/1x160

RRD250/40/V2A/EPDM/1x160
RRD250/40/V2A/EPDM/1x170
RRD250/40/V2A/EPDM/1x180
RRD250/40/V2A/EPDM/1x200
RRD250/40/V2A/EPDM/1x210

RRD300/40/V2A/EPDM/1x200
RRD300/40/V2A/EPDM/1x210
RRD300/40/V2A/EPDM/1x219
RRD300/40/V2A/EPDM/1x225
RRD300/40/V2A/EPDM/1x250

RRD400/40/V2A/EPDM/1x275
RRD400/40/V2A/EPDM/1x280
RRD400/40/V2A/EPDM/1x315
RRD400/40/V2A/EPDM/1x326

RRD500/40/V2A/EPDM/1x400
RRD500/40/V2A/EPDM/1x429
RRD500/40/V2A/EPDM/1x450



Annular sealing RRD3

Made from EPDM rubber, 60 mm against pressurised water,

Metal parts made from A2 stainless steel

Product name:

**RRD(A)/60/V2A/EPDM
1x(D)**

(A) = Outside diameter RRD3
= Inside diameter of core drilling or wall sleeve
(D) = Outside diameter of pipe (Øa)

Available variants:

RRD100/60/V2A/EPDM/1x34
RRD100/60/V2A/EPDM/1x43
RRD100/60/V2A/EPDM/1x50
RRD100/60/V2A/EPDM/1x63

RRD125/60/V2A/EPDM/1x63
RRD125/60/V2A/EPDM/1x75
RRD125/60/V2A/EPDM/1x83

RRD150/60/V2A/EPDM/1x83
RRD150/60/V2A/EPDM/1x92
RRD150/60/V2A/EPDM/1x110

RRD200/60/V2A/EPDM/1x110
RRD200/60/V2A/EPDM/1x118
RRD200/60/V2A/EPDM/1x126
RRD200/60/V2A/EPDM/1x135
RRD200/60/V2A/EPDM/1x140
RRD200/60/V2A/EPDM/1x160

RRD250/60/V2A/EPDM/1x160
RRD250/60/V2A/EPDM/1x170
RRD250/60/V2A/EPDM/1x180
RRD250/60/V2A/EPDM/1x200
RRD250/60/V2A/EPDM/1x210

RRD300/60/V2A/EPDM/1x200
RRD300/60/V2A/EPDM/1x210
RRD300/60/V2A/EPDM/1x219
RRD300/60/V2A/EPDM/1x225
RRD300/60/V2A/EPDM/1x250

RRD400/60/V2A/EPDM/1x275
RRD400/60/V2A/EPDM/1x280
RRD400/60/V2A/EPDM/1x315
RRD400/60/V2A/EPDM/1x326

RRD500/60/V2A/EPDM/1x400
RRD500/60/V2A/EPDM/1x429
RRD500/60/V2A/EPDM/1x450

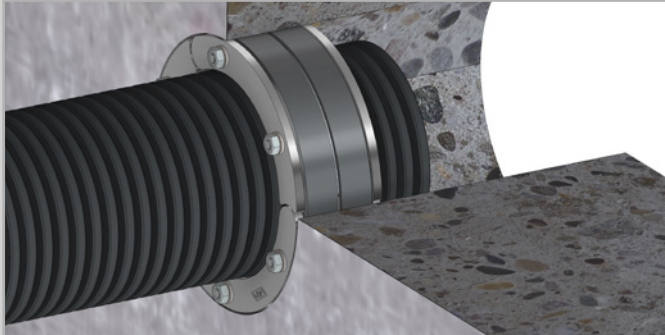
Please note that all variants of the RRD system are supplied as a closed version. The RRD systems can be easily split with a blade on the construction site, the stainless steel parts must be assembled after the parts have been assembled.

RRD-WR

Annular sealing for corrugated pipe

► Experience the sealing of corrugated pipes in a whole new way!

The **annular sealing for corrugated pipe RRD-WR** system enables fast and secure connection of corrugated cable conduits or district heating pipes. The integrated support ring protects the corrugated pipe against deformation and damage and also functions as rip-out protection. The sealing insert is supplied as a split version and is therefore ready for assembly.



► Area of application

- Sealing and connecting corrugated pipes (e.g. Kabuflex pipes) for building connections
- Sealing in core drillings or wall sleeves with inside \varnothing 100 to 200 mm
- For corrugated pipes with outside diameter of \varnothing 110, 125 and 160 mm



Annular sealing RRD1-WR1

Made from EPDM rubber, 40 mm against non-pressurised water, as split version and in integrated support ring, metal parts made of A2 stainless steel

Product name:

**RRD-WR(A)/G/40/V2A/EPDM
1x(D)**

(A) = Outside diameter RRD-WR
= Inside diameter of
core drilling and wall sleeve

(D) = Outside diameter of corrugated pipe
($\varnothing a$)

Available variants:

RRD-WR100/G/40/V2A/EPDM/1x50
RRD-WR100/G/40/V2A/EPDM/1x63

RRD-WR125/G/40/V2A/EPDM/1x63
RRD-WR125/G/40/V2A/EPDM/1x75

RRD-WR150/G/40/V2A/EPDM/1x90
RRD-WR150/G/40/V2A/EPDM/1x110

RRD-WR200/G/40/V2A/EPDM/1x110
RRD-WR200/G/40/V2A/EPDM/1x120
RRD-WR200/G/40/V2A/EPDM/1x125
RRD-WR200/G/40/V2A/EPDM/1x145
RRD-WR200/G/40/V2A/EPDM/1x160



Annular sealing RRD1-WR2

Made from EPDM rubber, 60 mm against pressurised water, as split version and in integrated support ring, metal parts made of A2 stainless steel

Product name:

**RRD-WR(A)/G/60/V2A/EPDM
1x(D)**

(A) = Outside diameter RRD-WR
= Inside diameter of
core drilling and wall sleeve

(D) = Outside diameter of corrugated pipe
($\varnothing a$)

Available variants:

RRD-WR100/G/60/V2A/EPDM/1x50
RRD-WR100/G/60/V2A/EPDM/1x63

RRD-WR125/G/60/V2A/EPDM/1x63
RRD-WR125/G/60/V2A/EPDM/1x75

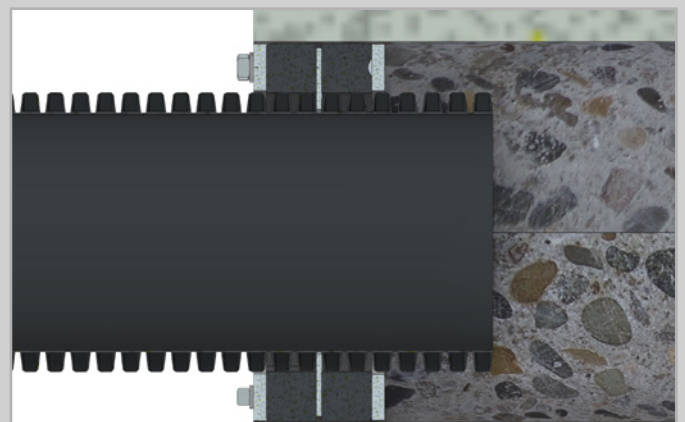
RRD-WR150/G/60/V2A/EPDM/1x90
RRD-WR150/G/60/V2A/EPDM/1x110

RRD-WR200/G/60/V2A/EPDM/1x110
RRD-WR200/G/60/V2A/EPDM/1x120
RRD-WR200/G/60/V2A/EPDM/1x125
RRD-WR200/G/60/V2A/EPDM/1x145
RRD-WR200/G/60/V2A/EPDM/1x160

► Advantages:

- With patented support ring to protect the corrugated pipe and as rip-out protection
- High-quality and robust materials such as A2 stainless steel and EPDM rubber
- Gas and waterproof (40 mm up to 2.5 bar, 60 mm up to 5 bar)
- In split, ready to install version
- Cost-effective standard sizes
- Fixing of the corrugated pipe in the core drilling
- Short assembly time
- Sound-insulating
- Protection against rodents

► Sectional drawing after pressing:



The RRD-WR sealing insert for corrugated pipes is supplied in a split version.

Video on
YouTube



Dimension table: outside diameter of pipe in mm (D)

Material/pipe type		Copper pipes	Steel pipes	Steel pipes with 2-layer PE coating	Steel pipes with 3-layer PE coating	Steel pipes with connecting sleeve	SML and TML pipes	Ductile cast iron ducts	Hard PE pipes District heating line depending on manufacturer	Clay pipes, standard design	Clay pipes, reinforced design	PE pipes HDPE PE 63 PE 80 PE 100	KG 2000 HT/KA pipes KG pipes	PVC pressure pipes PN 4 - 25	PP PVC-C ABS
DIN/EN		1057 12449	10255 10220	10287	10285	1123-2	877	545 598 969		1230	1230	12201	19534 19538	19532	19561 16891 19531
Inch-	DN														
	4	4													
	6	6	10.2	13.8	15.2										
	8	8	13.5	17.1	18.5										
3/8	10	10	16 17.2	20.8	22.2							10		16	
	12	12										12			
1/2	15	15 18	20 21.3	24.9	26.3				110			16		20	
3/4	20		26.9	30.5	31.9				90/125			20		25	
	22	22													
1	25	28	33.7	37.3	38.7				90/125			25		32	
1 1/4	32	35	42.4	46	47.4				110/125			32		40	40
1 1/2	40	42	48.3	51.9	53.3	42	48		110/125			40	40	50	50
2	50	54	60.3	63.9	65.3	53	58		125/140	78+/-3		50/63	50	63	
2 1/2	65		76.1	79.7	81.1				140/160	105+/-4					
	70	70				73									
	75	76.1										75	75	75	75
3	80	88.9	88.9	92.5	93.9	89	83	89	160/180						
	90											90	90	90	90
4	100	108	114.3	117.9	119.3	102	110	118	200/225	132+/-4					
	110											110	110	110	110
5	125	133	139.7	143.7	145.1	133	135	144	225/250	160+/-4		125	125	140	125
6	150	159	165.1	172.3	173.7	159	160	170	250/280	187+/-5					
	160											160	160	160	160
8	200	219	219.1	223.1	224.5	219	210	222	315/355	242+/-5	262+/-5	200	200	225	200
	225											225			
10	250	267	273	277.4	278.4	273	275	274	400/450	296+/-6	318+/-6	250	250		250
12	300		323.9	328.3	329.7	324	326	326	450/500	350+/-7	374+/-7	315	315		315
14	350		355.6	360	361.4			378	500	404+/-7	430+/-7	355			
16	400		406.4	410.8	412.2		429	429	560/630	460+/-8	490+/-8	400	400		400
	450							480		516+/-8	548+/-8	450			
	500		508	512.4	513.8			532		573+/-9	607+/-9	500	500/560		500
	600		610					635		681+/-12	721+/-12	600	630		630
	630											600	630		630
	700							738		790+/-15	831+/-15	710			
	800							842		895+/-17	941+/-17	800			

All information subject to change!

Millimetre specifications, which are separated by a slash (e.g. 160/180) indicate the various possible outside diameters for the respective pipe type. When ordering, please always specify the actual outside diameter of the pipe.

UGA SYSTEM-TECHNIK GmbH & Co. KG
Heidenheimer Str. 80 – 82, 89542 Herbrechtingen,
Germany
Tel. +49 7324 9696-0, Fax +49 7324 9696-96
info@uga.eu, www.uga.eu

We shall supply replacements for all parts that impair functionality due to material defects. No replacements will be provided for defects that are due to transport or storage or are caused by incorrect processing or installation or consequences of such. Our information is based on current technical knowledge. Subject to technical changes. Because of the abundance of possible influences during assembly and use, our information does not exempt processors and users from their own trials and tests.
The corresponding installation instructions apply to all UGA products.