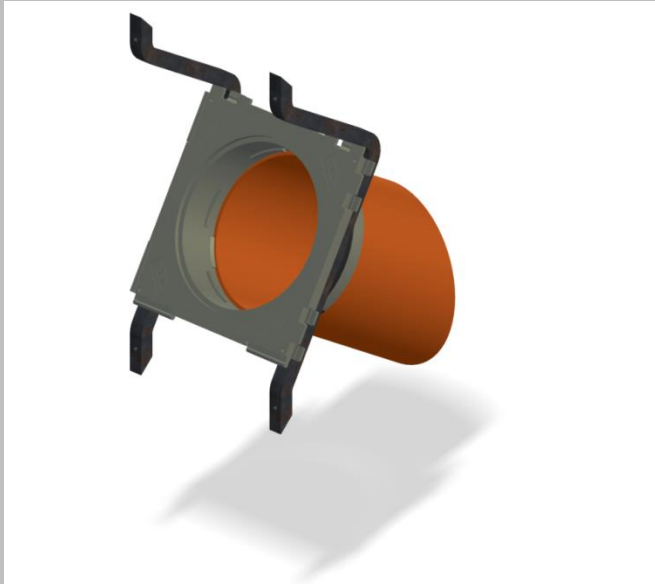


Product data sheet

BKD150-K-S(30,45,60)/(L)

Bayonet single angular sealing sleeve BKD150



Advantages and use:

- Quick and easy installation
- Gas-tight and pressure-water-tight due to blind cover already during installation
- Permanently reliable sealing
- one-sided connection possibility of various variants due to custom-fit system covers and system inserts
- For inclined cable passages from any direction.
- Enables an optimum bending radius when inserting and sealing cables or when connecting cable conduits (e.g. KSS150).
- Steel subframe with nail holes
- Delivery ready for installation with polystyrene wedge for flush formwork installation

Technical details:

- Gas- and watertight up to 2.5 bar
- Centre distance: 210 mm
- Minimum wall thickness: 240 mm
- Use in structures still to be constructed for WU concrete structures (white tank) Stress class 1 and 2
- Mounting direction to be determined for single angular sealing sleeves
- The minimum concrete cover of 200 mm in accordance with the WU guideline (data sheet H10) is only achieved with the BKD150-K-S30 inclined seal pack from a wall thickness of 350 mm (S45 - 400 mm).
- Package formation only possible in one row

Material specification:

Sealing sleeve (ABS), 3-web seal (TPE) Intermediate pipe (PVC), system cover closed (ABS) with sealing lip (TPE), Styrofoam wedge, Subframe (steel S235YR, former St 37)

Test certificates:

Fraunhofer Institut IFAM Dichtheitsprüfung

