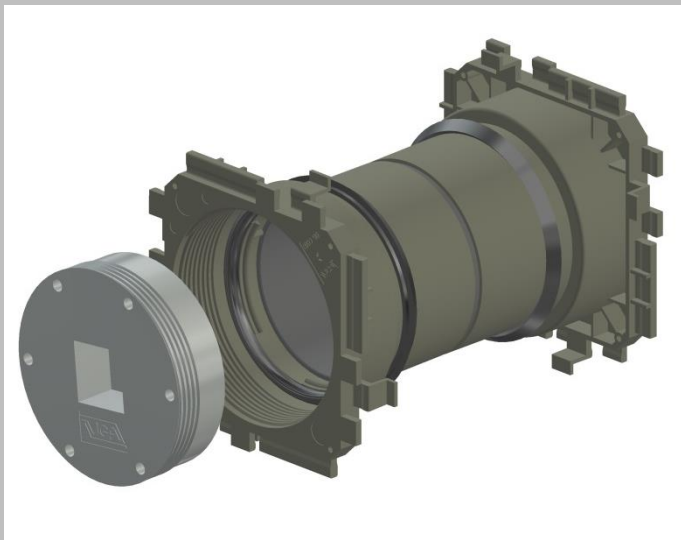


Product data sheet

BKD90-K2/(L)

Bayonet double sealing sleeve BKD90



Advantages and use:

- Quick and easy installation
- Gas-tight and pressure-water-tight due to blind cover already during installation
- Permanently reliable sealing
- Connection of various variants from both sides possible due to custom-fit system covers and system inserts
- Simple plugging together of the sealing sleeves allows the formation of packs
- No post-processing required

Technical details:

- Gas- and watertight up to 2.5 bar
- Frame size: 135 x 135 mm (per sealing package)
- Centre distance: 125 mm
- Minimum wall thickness: 100 mm
- Use in structures still to be constructed for wp concrete structures (white tank) Stress class 1 and 2

Material specification:

Sealing sleeve (ABS), water barrier (SBR)
Intermediate pipe (PVC), blind cover (ABS) with O-ring seal made of NBR

Test certificates:

Fraunhofer Institut IFAM Leak test.

