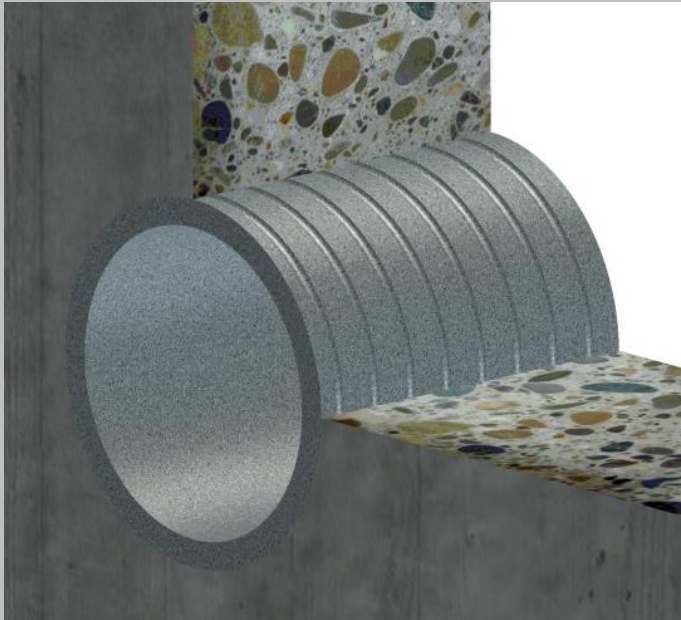


Product data sheet

FU-FZ/(A)/(G)/U(L)

Casing tubes made of fibre cement

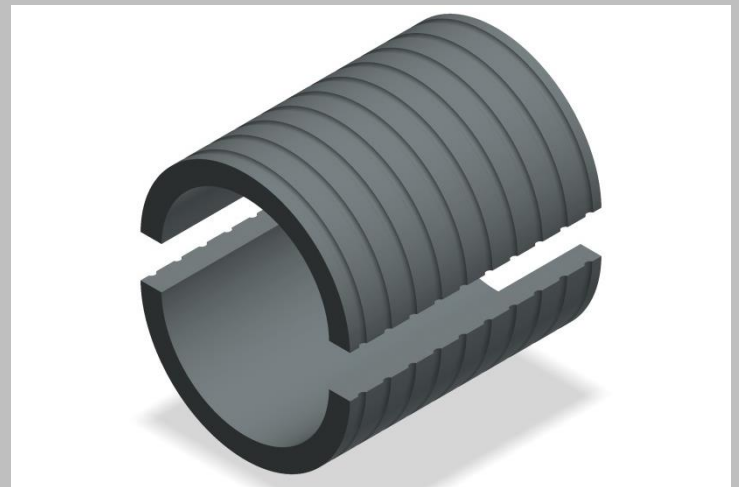


Advantages and use:

- Use in structures or parts of structures still to be constructed from WU concrete (white tank)
- The inside diameter (A) corresponds exactly to the nominal diameter.
- Homogeneous connection to the concrete, reinforced by special grooving
- Coefficient of expansion of the material corresponds to that of concrete
- Pipes and cables are sealed with a rubber press seal or a ring room seal (not included).

Technical details:

- Watertight up to 5 bar
- Suitable for WP concrete stress class 1, 2 and double element walls
- For non-pressing and pressing water
- Available as split version **FU-FZ/(A)/G/U(L)** with sealant and stainless steel straps



Material specification:

Fibre cement (asbestos-free)

Test certificates:

MFPA Leipzig Leak test

Product data sheet

FU-FZ/(A)/(G)/U(L)

Casing tubes made of fibre cement



Kabel- und Rohrdurchführungen

Productname	Length
FU-FZ80/(L)	up to 1200 mm
FU-FZ100/(L)	up to 1200 mm
FU-FZ125/(L)	up to 1200 mm
FU-FZ150/(L)	up to 1200 mm
FU-FZ200/(L)	up to 1200 mm
FU-FZ250/(L)	up to 1200 mm
FU-FZ300/(L)	up to 1200 mm
FU-FZ350/(L)	up to 1200 mm
FU-FZ400/(L)	up to 1200 mm
FU-FZ450/(L)	up to 1200 mm
FU-FZ500/(L)	up to 1200 mm
FU-FZ600/(L)	up to 1200 mm
FU-FZ700/(L)	up to 1200 mm
FU-FZ800/(L)	up to 1200 mm
FU-FZ900/(L)	up to 1000 mm
FU-FZ1000/(L)	up to 1000 mm
FU-FZ1100/(L)	up to 1000 mm
FU-FZ1200/(L)	up to 1000 mm
FU-FZ1300/(L)	up to 1000 mm
FU-FZ1400/(L)	up to 1000 mm